

About The Grove Studio

Building access

- Automatic door at building entrance
- Elevator access to second floor
- Accessible bathrooms on second floor
- Kitchenette on third floor

Space overview

- 800 sq/ft open space
- 50 standing 30 seated
- Wall to wall windows
- 11 ft ceilings

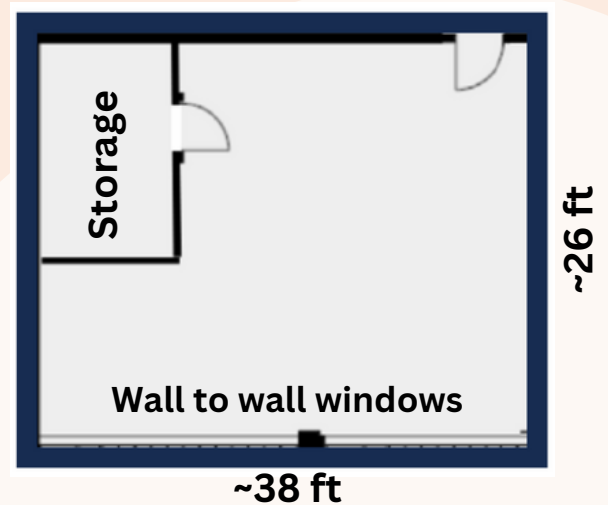
Seating at the Grove

- **20 White folding chairs**
 - (max 225lbs / 102 kg static)
- **10 Blue / black stacking chairs**
 - (max 660lbs / 299.3 kg static)
- **1 Brown couch**
 - (max 700lbs / 317.5 kg static)
- **4 Rustic brown stools**
 - (max 264.5lbs / 120 kg static)

www.grove613.ca

18 Louisa Street Unit 280

Entrance
from hallway



Studio has:

- Sharps container
- Burn and First Aid kit
- Air filters
- Building-maintained HVAC
- Partially sound treated
- COVID masks available at entrance
- Coffee machine and fridge

